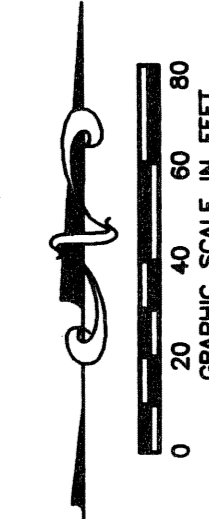


# MIRASOL PARCEL SIXTEEN

BEING A REPLAT OF TRACT 16, MIRASOL PLAT SIX, AS RECORDED IN PLAT BOOK 104, PAGES 89 THROUGH 109 OF THE PUBLIC RECORDS OF PALM BEACH COUNTY, FLORIDA  
 PART OF MIRASOL P.C.D.  
 BEING IN SECTION 03, TOWNSHIP 42 SOUTH, RANGE 42 EAST, CITY OF PALM BEACH GARDENS, PALM BEACH COUNTY, FLORIDA  
 SHEET 6 OF 6

136

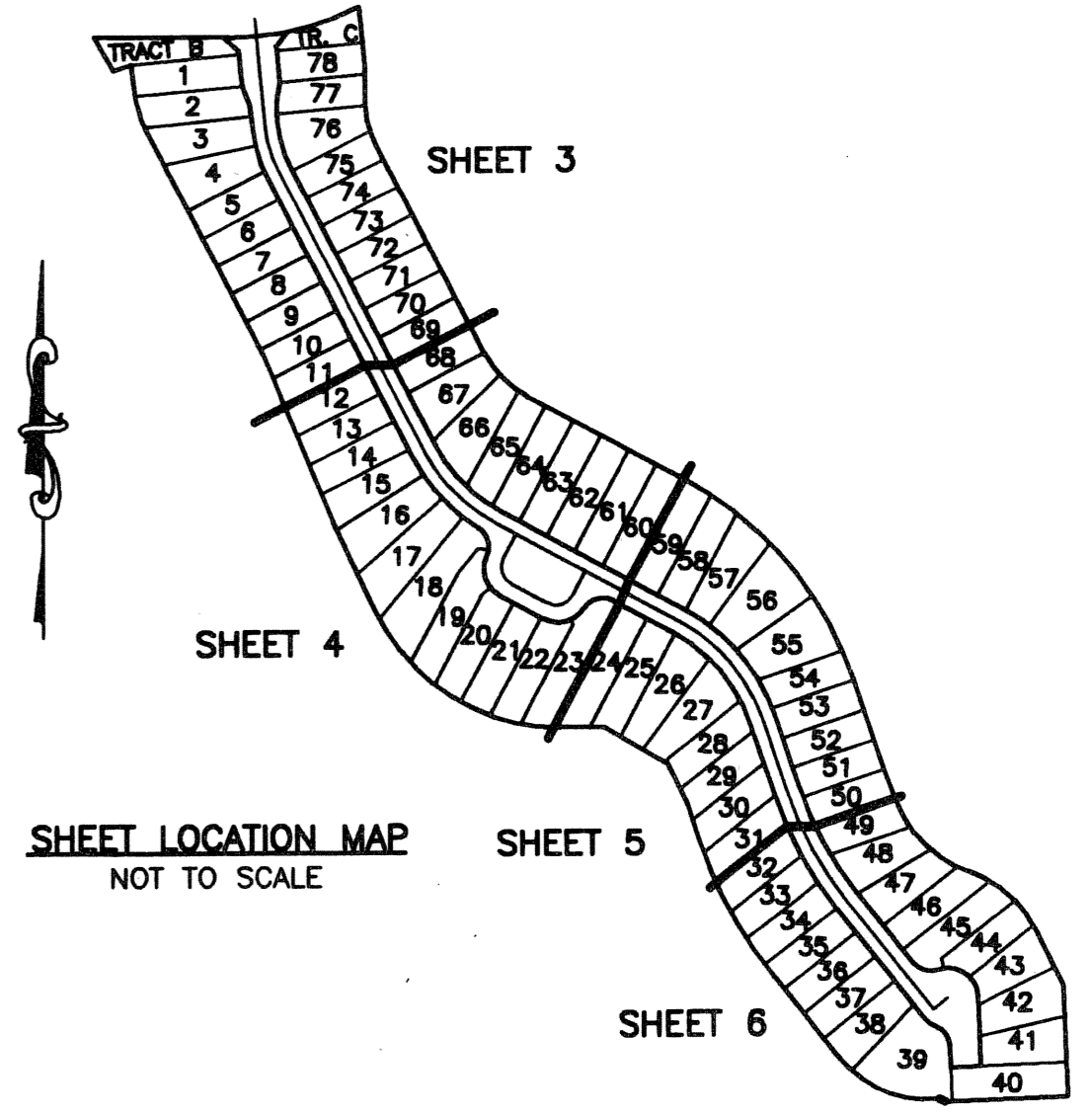
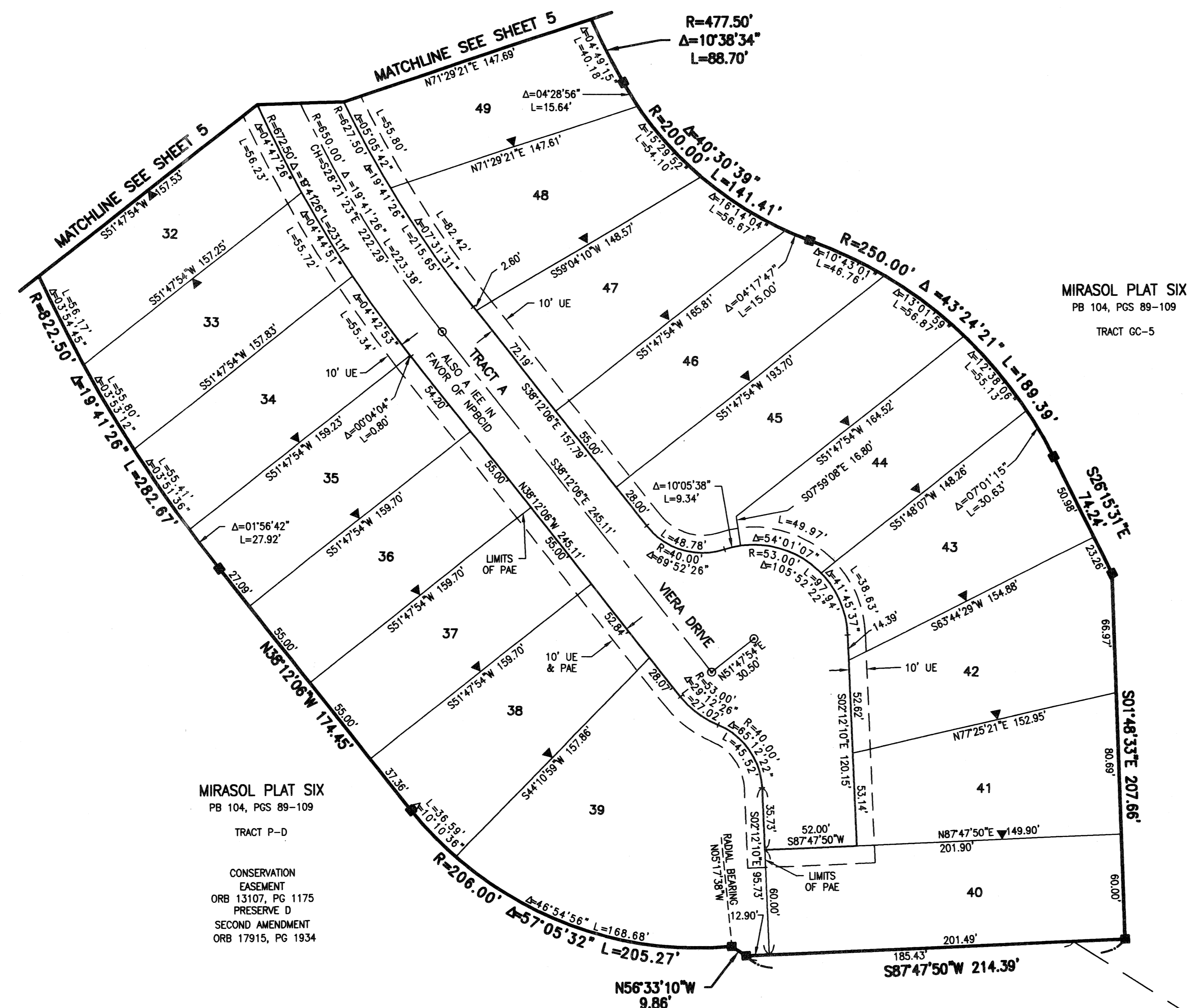
STATE OF FLORIDA  
 COUNTY OF PALM BEACH  
 THIS PLAT WAS FILED FOR RECORD \_\_\_\_\_ DAY OF \_\_\_\_\_ AD. 2005 AND DULY RECORDED IN PLAT BOOK \_\_\_\_\_ ON PAGES \_\_\_\_\_ THROUGH \_\_\_\_\_  
 SHARON R. BOCK,  
 CLERK & COMPTROLLER  
 BY: \_\_\_\_\_, DC.



CIRCUIT COURT SEAL

### LEGEND

- CL CENTERLINE
- Δ CENTRAL (DELTA) ANGLE
- CH CHORD
- DE DRAINAGE EASEMENT
- ESMT EASEMENT
- IEE INGRESS-EGRESS EASEMENT
- L ARC LENGTH
- NPBC1D NORTHERN PALM BEACH COUNTY IMPROVEMENT DISTRICT OFFICIAL RECORD BOOK
- ORB ORB
- P AE PEDESTRIAN ACCESS EASEMENT
- PB PLAT BOOK
- PG(S) PAGE(S)
- PM PERMANENT REFERENCE MONUMENT FOUND LB 048 (4" x 4" CONCRETE)
- PR PERMANENT REFERENCE MONUMENT SET LB 048 (4" x 4" CONCRETE)
- PC PERMANENT CONTROL POINT SET LB 048
- PCD PLANNED COMMUNITY DEVELOPMENT
- PME PRESERVE MAINTENANCE EASEMENT
- R RADIUS
- SUA SEACOAST UTILITY AUTHORITY
- UE UTILITY EASEMENT
- WLE WATER LINE EASEMENT
- WMAE WATER MAINTENANCE ACCESS EASEMENT
- ▼ ZERO LOT LINE INDICATOR



THIS INSTRUMENT WAS PREPARED BY MANUEL A. GUTIERREZ, P.S.M. IN THE OFFICES OF MOCK, ROOS & ASSOCIATES, INC., 5720 CORPORATE WAY, WEST PALM BEACH, FLORIDA 33407.

SHEET 6 OF 6

SCALE: 1"=40'	FLORIDA L.B. NO. 48	<b>MIRASOL PARCEL SIXTEEN</b> BEING A REPLAT OF TRACT 16, MIRASOL PLAT SIX, PLAT BOOK 104, PAGES 89 THROUGH 109 PART OF MIRASOL P.C.D. BEING IN SECTION 03, TOWNSHIP 42 SOUTH, RANGE 42 EAST, CITY OF PALM BEACH GARDENS, PALM BEACH COUNTY, FLORIDA
P.A. NO.: 99377.00	<b>MOCK • ROOS</b> ENGINEERS • SURVEYORS • PLANNERS	
DATE: AUGUST 2004	5720 Corporate Way, West Palm Beach, Florida 33407 (561) 683-3113, fax 478-7248	
DRAWING NO.: 42-42-03-133		

S:\toy\toy\pa16\dwg\pa16rp02.dwg 5/3/2005 8:32:37 AM EDT

REVISED 04-05-05  
 CAD FILE:  
 TAYLPA16\PA16RP02